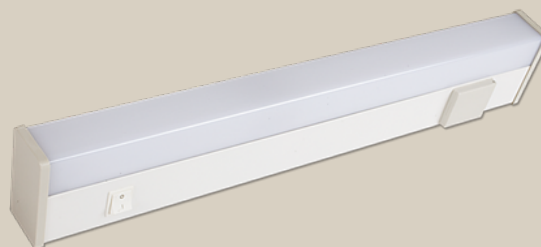


## TL14

Functional mirror light



Mirror lamp for wall mounting above or on side of mirror. Also available as berth lamp. Rectangular design. Correct mirror lighting with soft light distribution.

Robust, steel housing with spring operated plastic end caps. Powder coated white RAL9016.

OP = Diffuser in Opal polycarbonate V0 quality

S = Switch, SC = Schuco socket

U = Universal razor socket with transformer and selector 230/110V

# TL14

## TECHNICAL DESCRIPTION

### LIGHT SOURCE

T16 (T5) for 8W  
T26 (T8) for 15, 18 and 36 W

### MOUNTING

To be installed directly to wall or ceiling

### ELECTRIC

With electronic ballast.. Variants with magnetic ballasts available on request. Variants with two-pole switch (S), with universal shaver socket and transformer for 110/220V (U) or with Schuko socket (SC) are available.

### HOUSING

Steel housing with spring operated plastic end caps

### APPLICATION

Mirror lamp for wall mounting above or on side of mirror. Also available as berth lamp.

### DESIGN

Classic design. Easy refitting of lamp without tool.

### FINISH

Powder coated white RAL9016

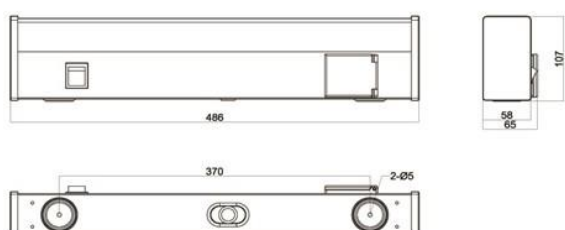
### OPTIC

Opal polycarbonate diffuser in V0 quality

### CONNECTION

One hole Ø19 mm with grommet in back. One knock-out Ø19 at top. One 3-way push in terminal block, 2 x 2.5 mm².

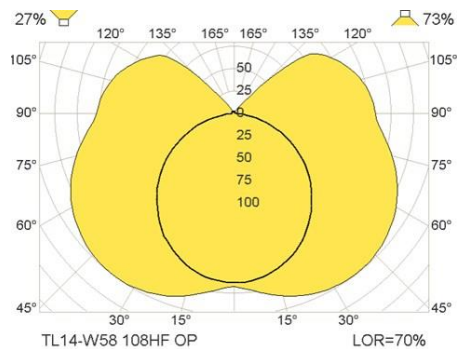
## MEASUREMENT DRAWINGS



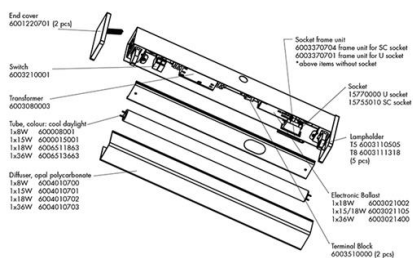
TL14

# TL14

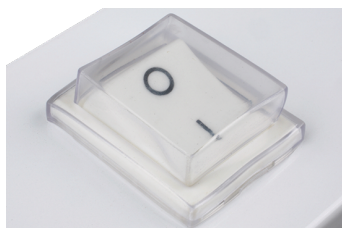
## LIGHT MEASUREMENT DRAWINGS



## EXPLOSION DRAWINGS



## GALLERY



Switch with rubber cover