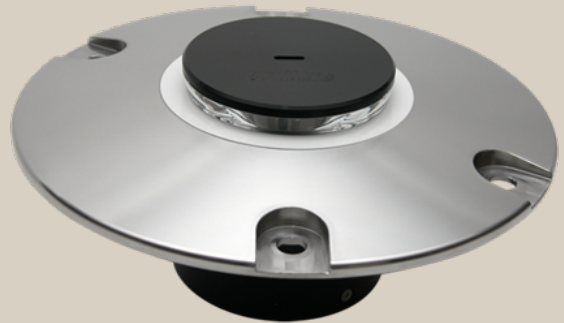


# HL55-P Perimeter light

LED-Perimeter lights HL55-P



Perimeter lights are used to mark and illuminate the perimeter of helideck. These green LED lights help the helicopter pilot to locate the helideck for safety landing by night.

Perimeter lights are available as surface version in different types of assembly and recessed version in different diameters. Our perimeter lights comply to ICAO and CAP437.

HL55-P is produced with seawater resistant materials and has a compact structure. It is easy to install. The obstacle light is characterized by its low power consumption, not exceeding 7 W – depending on type and voltage. It includes state of the art LED technology, which makes the obstacle light nearly maintenance free. The integrated fail safe function and the vibration-resistant technology ensure the necessary reliability required in demanding applications. The product offers also a dimming function (10%, 30% and 100%).

# HL55-P Perimeter light

## TECHNICAL DESCRIPTION

LIGHT SOURCE
High power LED green (not changeable)
OPTIC
Seawater resistant lens (PMMA)
ELECTRIC
24V, 110-230V The lights are equipped with different cable entries depending on type: <ul style="list-style-type: none"><li>- HL55-P Recessed (1 x M16) incl. 0,5m cable for installation</li><li>- HL55-P Surface on connection box (2 x M20). The connection box can be open for installation</li><li>- HL55-P Surface on horizontal bracket (1 x M16) incl. 0,5m cable for installation</li></ul>
APPLICATION

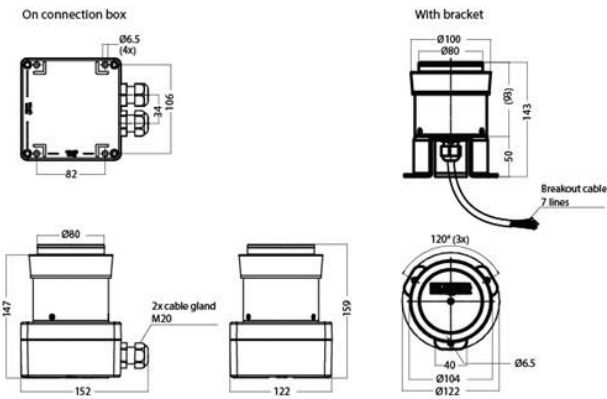
Easy installation, 2xM20 cable entries for connection box, low power consumption, maintenance free technology, rated lifetime 100 000 hours depending on ambient temperature. Small and compact design. Recessed and surface mounted.

APPROVALS
ICAO Annex 14 Vol II Heliport, cap 437
HOUSING
Seawater resistant aluminium
FINISH
Black anodized aluminium
MOUNTING

Mounting depends on type:

- 4 holes Ø 9,5mm (recessed type)
- 4 holes Ø 6,5mm (on connection box)
- 3 holes Ø 6,5mm ( horizontal bracket)

## MEASUREMENT DRAWINGS



# HL55-P Perimeter light

---

## PLACEMENT/MOUNTING

---



---

## GALLERY

---



HL55-P LED-Perimeter light  
surface on connection box