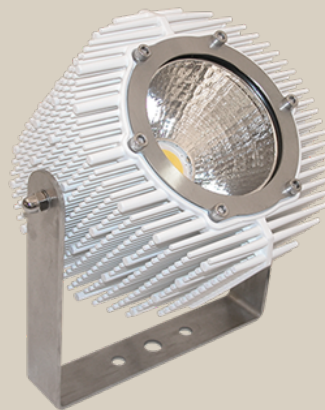


FL40 LED

Floodlight with LED lightsource



The LED floodlights are designed for a long lifetime and high efficiency. The LED gives instant light and is immune against voltage drops. The special design of seawater resistant aluminium anodized module housing secures an excellent cooling. Mounting frame and bracket are made of stainless steel.

The floodlights are designed according to rules of maritime classification societies, additional VDE and IEC/EN.

FL40 LED

TECHNICAL DESCRIPTION

MOUNTING

Adjustable brackets stainless steel 316, unpowdered

ELECTRIC

Inbuild driver for 110 to 240 V AC/DC (50/60Hz) or 12V to 24V DC. Connection cable 1.5m

High voltage version:

110 VAC - 240 VAC (50/60Hz), >94% effectiveness

Low voltage version:

12 VDC - 24 VDC, > 94% effectiveness

HOUSING

Seawater resistant aluminium module housing, RAL9016

Polyester coated, stainless steel mounting bracket

LIGHTSOURCE/OPTIC

The included 100W high power LED light source with 10.000lm light output and the driver are designed for a long rated life time of 50.000 hours at ta 45°C and covered by a safty glass diffuser. The floodlight is available with different characteristics as Spot Beam (SB), Narrow Beam (NB), Medium Beam (MB) or Wide Beam (WB).

LED in 3000k, 4000k, 5000k light colour.

A dimmable version is available on request.

REMARKS

Weight: 3,7 kg

Protection degree: IP68

Impact resistance: IK08

CE

TEMPERATURE

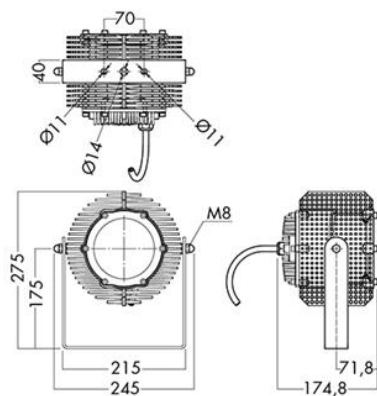
from -35° up to +45°C.

CONNECTION CABLE

Connection cable 1.5m; 3-wire / dimmable version; 5-wire (0-10V)

FL40 LED

MEASUREMENT DRAWINGS



FL40

LIGHT MEASUREMENT DRAWINGS

