

## FL60 LED

Floodlights with LED lightsource



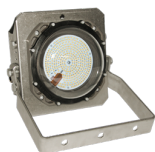
The LED floodlights are designed for a long lifetime and high efficiency. The LED gives instant light and is immune against voltage drops. The special design of seawater resistant aluminium anodized module housing secures an excellent cooling. Mounting frame and bracket are made of stainless steel.

The floodlights are designed according to rules of maritime classification societies, additional VDE and IEC/EN.

## FL60 LED



FL60 2 modules



FL60 1 module



FL60 4 modules



FL60 3 modules



FL60 Spot

## TECHNICAL DESCRIPTION

### MOUNTING

Adjustable brackets stainless steel 316, unpowdered

### CONNECTION

Exteral connection box at the back with 2 Nickel plated brass cable glands M24 for cable diameter of 10mm to 14mm. Terminals for 6mm<sup>2</sup> external connection and through wiring.

### ELECTRIC

New intergrated driver technology.  
Two brass cable entries M24x1,5 as standard for through wiring.  
3-pole terminal 6mm<sup>2</sup>

### HOUSING

Seawater resistant aluminium anodized module housing,  
stainless steel frame and mounting bracket

### LIGHTSOURCE/OPTIC

The included LED light source and driver are designed for an extreme long life time of 100.000 hours at ta 45°C with remaining 70% light output (L70). The floodlight is available with different characteristics as WB, MB and NB.

### APPLICATION

IP 66/67 floodlight for decks and hulls, industrial areas

### DESIGN

According to rules of maritime classification societies

### AMBIENT TEMPERATURE

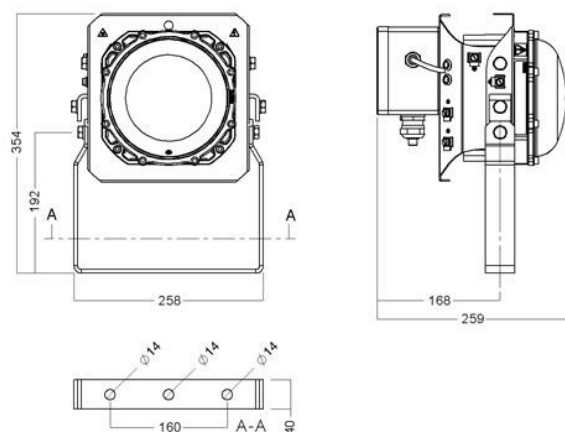
Operation temperature from -45°C up to +55°C

### FINISH

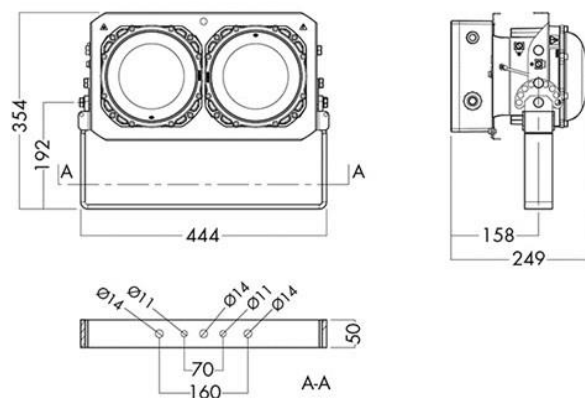
Anodised modules, special colours on request

# FL60 LED

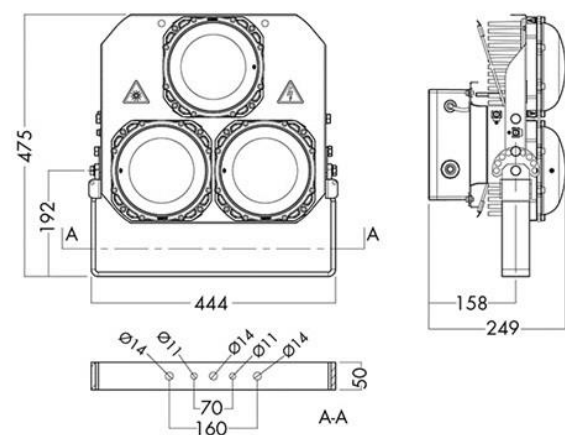
## MEASUREMENT DRAWINGS



FL60 1 module

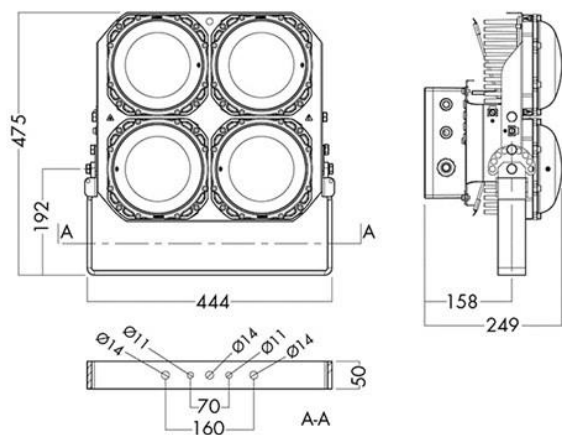


FL60 2 modules



FL60 3 modules

# FL60 LED



FL60 4 modules

## EXPLOSION DRAWINGS

