

1076 HI | HS

Floodlight for metal halide (HI) or high pressure sodium (HS) lamps



Floodlights for metal halide (HI) or high pressure sodium (HS) with seamless housing of deep drawn stainless steel ASIS 316. The housing is powder coated white and enamelled up to 70-80 µm thickness. The floodlights provide extreme corrosion resistance and high light output. No tools are required to open the housing. Ballast unit to be ordered separately for floodlights without ballast included.

Floodlights are designed according to rules of maritime classification societies, additional VDE and IEC/EN and are applicable for decks, rescue areas, holds, ramps, industrial and sport areas.

1076 HI | HS



1067 010-011



1076 015-044



10769 007/009



1076 008



1076 075-080

1076 HI | HS

TECHNICAL DESCRIPTION

1076 HI | HS

LIGHT SOURCE

1076 007/009
HIT/HST 2 x 400W (not included). Lamp base E40.

1076 008 / 010-011 / 015-044
HIT/HST max 400 W

1076 081-082
HIT/HST 1000 W

1076 075-080
HST 70W

1076 152
HST 600W

OPTIC

1076 007/009
Floodlight is available in narrow or wide beam characteristic, with clear safety glass front cover and with highly polished aluminium reflector.

ELECTRIC

1076 007/009
Flexible wiring, silicone insulated, heat resistant up to 180°C; two external connection boxes with one ignition unit each, terminal 3-pole / 6 mm². Ballast type 1507 has to be ordered separately.

1076 008 / 010-011 / 081-082
External connection box with brass cable gland M24 x 1.5 MGCG for cable diameter of 10 mm to 12.5 mm including the igniter. Terminals for 6 mm² external connection.

1076 015-044 / 075-080 / 152
External connection box with brass cable gland M24 x 1.5 MGCG for cable diameter of 10 mm to 12.5 mm including the igniter. Terminals for 6 mm² external connection. Ballast integrated in housing of the floodlight.

HOUSING

Seamless housing of deep drawn stainless steel. Bracket and housing stainless steel. The housing is powder coated white and enamelled up to 70-80µm thickness.

AMBIENT TEMPERATURE

Operation temperature from -20°C p to +45°C. Special versions for -50°C available.

APPLICATION

Applicable for decks and holds, industrial areas and sport areas.

DESIGN

According to rules of maritime classification societies, additional IEC/EN.

MOUNTING

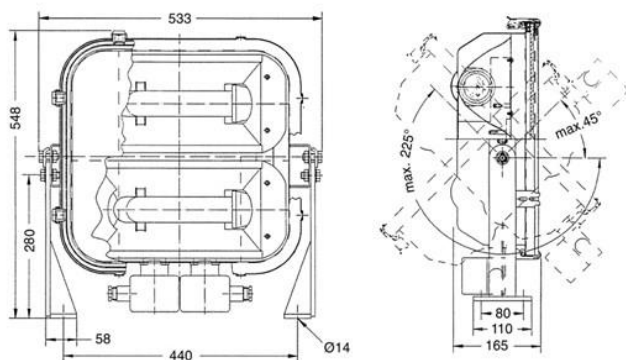
2 brass cable glands M24 x 1.5 MGCG; standard for cable dia. 10 to 12.5 mm

CONNECTION

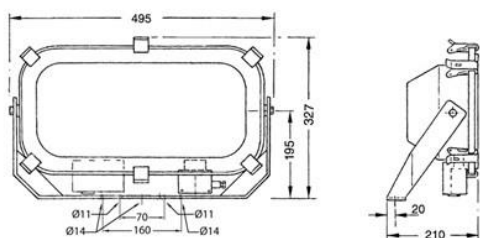
1076 007/009
connection boxes with one brass cable gland M24 x 1.5 MGCG for cable diameter of 10 mm to 12.5 mm each. Terminals for 6 mm² external connection.

1076 HI | HS

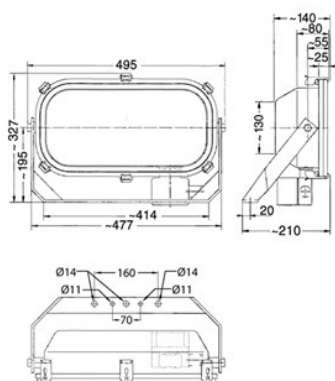
MEASUREMENT DRAWINGS



1076 007/009

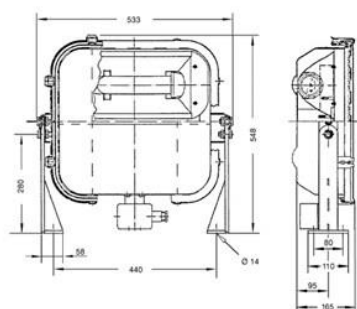


1076 008

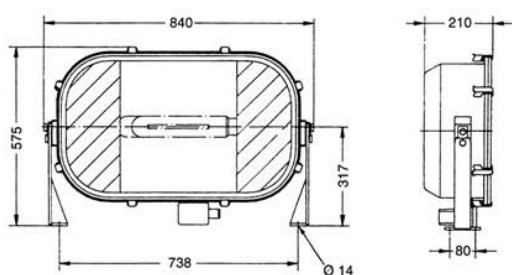


1076 010-011 / 1076 152

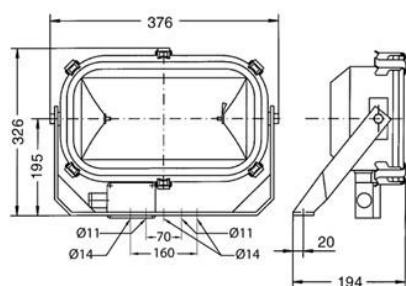
1076 HI | HS



1076 015 - 044



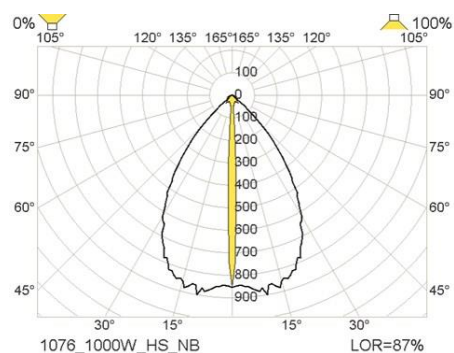
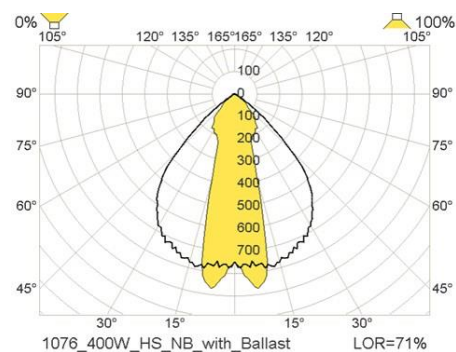
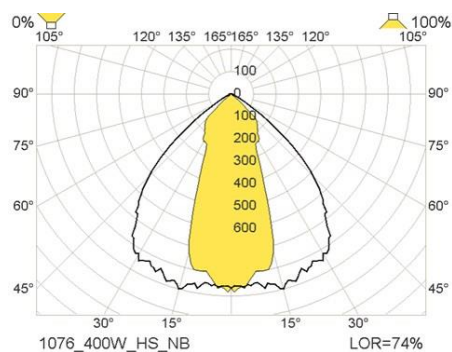
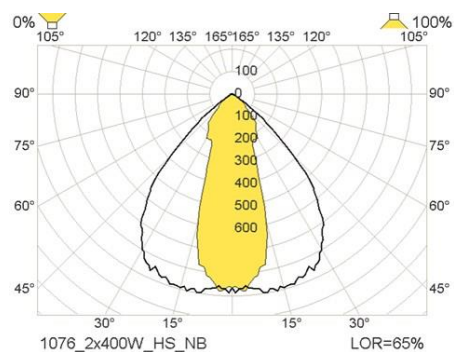
1076 081 / 082



1076 075 - 080

1076 HI | HS

LIGHT MEASUREMENT DRAWINGS



EXPLOSION DRAWINGS

